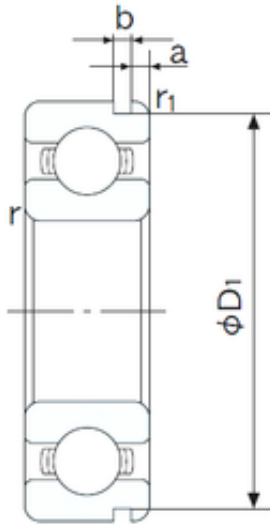




BEARINGS ACCESSORIES IMPORTED LTD



75 mm x 115 mm x 20 mm NACHI 6015N deep groove ball bearings

Bearing No. 6015N

Size	75x115x20 mm
Bore Diameter	75 mm
Outer Diameter	115 mm
Width	20 mm
d	75 mm
D	115 mm
B	20 mm
C	20 mm
a	2.87 mm
b	2.7 mm
r min.	1.1 mm
r1 min.	0.5 mm
D1	111.81 mm
Weight	0.615 Kg
Basic dynamic load rating (C)	39,5 kN
Basic static load rating (C0)	33,5 kN
(Grease) Lubrication Speed	5700 r/min
Bore Type	Cylindrical Bore
Enclosure	Open
Configuration	Single Row
Bore Size	75 mm
Outside Diameter	115 mm
Width	20 mm
Fillet Radius/Chamfer	1.1 mm
r1	0.5 mm

6015N Bearing 2D drawings and 3D CAD models



BEARINGS ACCESSORIES IMPORTED LTD

Groove Width	2.7 mm
Groove Diameter	111.8 mm
a (max)	2.9 mm
Dynamic Load Rating	39,500 N
Static Load Rating	33,500 N
Limiting Speed - Grease	5,700 rpm
Limiting Speed - Oil	6,700 rpm
Factor fo	15.7
Radial Clearance	0.010 to 0.030 mm
da (min)	81 mm
Da (max)	109 mm
Dx (min)	123 mm
ra (max)	1 mm
Cy (max)	5 mm